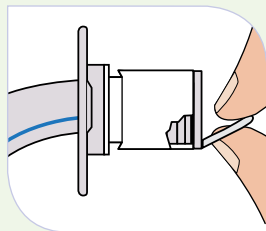


Portex® Blue Line Ultra® Tracheostomi tuber

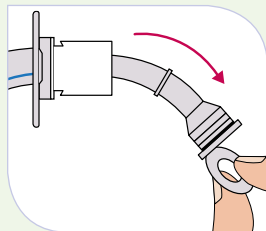
Skift af inderkanyle

Fjernelse



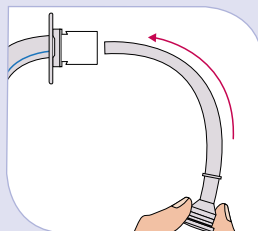
Frakobl tracheostomi-tubens 15mm konektor fra respiratorsystemet.

Tag fat i inderkanylens "træk" ring

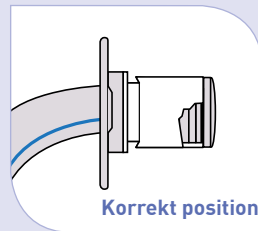


Tag inderkanylen ud ved at trække den nedad og udad, som indikeret på billedet her.

Indsætning



Pak den korrekte størrelse inderkanyle ud af den sterile forpakning. Ta fat i inderkanylen, som vist her på billedet, og indsæt den i tracheostomituben.



Indsæt forsigtigt inderkanylen, så den sidder på plads i tracheostomi-tubens 15mm konektor. Et let "klik" indikerer korrekt position. Tilslut respiratorsyste-met igen og kontroller at alt fungerer korrekt.

Portex®Blue Line Ultra® og Bivona® tracheostomituber

Style	Cuffed TTS AireCuf	Uncuffed	Tube ID (mm)	Inner Cannula Diameter (mm)	Tube OD (mm)	Length (mm)	Cuff Resting Diameter (mm)	Inner Cannula	Jackson Equivalent
Regular Fenestrated Suctionaid®	100/800/060 100/802/060 100/860/060	100/811/060 100/813/060	6.0	5.0	9.2	64.5	20.0	100/850/060 100/851/060	4
Bivona®	670160	60A160	6.0	-	8.8	70.0	-	-	4
Reg. Fenestrated Suctionaid®	100/800/070 100/802/070 100/860/070	100/811/070 100/813/070	7.0	6.0	10.5	70.0	24.0	100/850/070 100/851/070	None
Bivona®	670170 750170	60A170	7.0	5.5	10.0	80.0	-	*BRC270 *BRCA70	None
Regular Suctionaid®	100/800/075 100/860/075	100/811/075	7.5	6.5	11.3	73.0	30.0	100/850/075 100/851/075	None
Bivona®	670175	-	7.5	6.0	10.5	80.0	-	*BRC275 *BRCA75	None
Regular Fenestrated Suctionaid®	100/800/080 100/802/080 100/860/080	100/811/080 100/813/080	8.0	7.0	11.9	75.5	30.0	100/850/080 100/851/080	6
Bivona®	670180 750180	60A180	8.0	6.5	11.0	88.0	-	*BRC280 *BRCA280	None
Regular Suctionaid®	100/800/085 100/860/085	100/811/085	8.5	7.5	12.6	78.0	30.0	100/850/085 100/851/085	None
Bivona®	670185	-	8.5	7.0	11.8	88.0	-	*BRC285 *BRCA85	None
Regular Fenestrated Suctionaid®	100/800/090 100/802/090 100/860/090	100/811/090 100/813/090	9.0	8.0	13.3	81.0	30.0	100/850/090 100/851/090	8
Bivona®	670190 750190	60A190	9.0	7.5	12.3	98.0	-	*BRC290 *BRCA90	8
Regular Fenestrated Suctionaid®	100/800/100 100/802/100 100/860/100	100/811/100 100/813/100	10.0	9.0	14.0	87.5	30.0	100/850/100 100/851/100	10

*BRC2=2 pieces *BRCA=10 pieces