

smiths medical
level 1®

HOTLINE® Blood and Fluid Warmer

Temperature management solutions for improved patient outcome



SUPERIOR PERFORMANCE YOU'LL WARM TO

HOTLINE® BLOOD AND FLUID WARMER – HELP PREVENT HYPOTHERMIA

Even mild hypothermia can put your general anesthesia patients at risk for potentially costly and catastrophic complications, from delayed wound healing to cardiac arrest. That's why hospitals use HOTLINE® Blood and Fluid Warmers.

HOTLINE® Blood and Fluid Warmers help keep your patients warmer and can help keep your recovery room less crowded. Your patients and hospital can avoid unnecessary complications and may enjoy the benefits of cost savings from shorter recovery room stays.

HOTLINE® BLOOD AND FLUID WARMERS HELP CREATE RESULTS

- Superior performance results in warmer patients
- May reduce maintenance time for nurses and technicians
- May lower costs for your hospital

HELP KEEP PATIENTS WARM

- Patented triple lumen tubing maintains a layer of 42° Celsius (C) circulating solution around the IV line
- Keeps blood and fluids warm between 37-42 C when used according to Instructions for Use
- Helps eliminate patient line cool-down
- Outperforms hotplate technologies in 91% of all surgical procedures¹

HELPS REDUCE MAINTENANCE TIME

- The HOTLINE® Blood and Fluid Warmer has a once-a-year reservoir maintenance protocol versus hotplate warmers, which require maintenance up to 12 times a year
- Maintains a microbe-free environment when operated according to Instructions for Use

HELPS REDUCE COSTS

- Annual cleaning can mean less maintenance cost versus up to once a month for hotplate warmers
- Requires less priming volume than hotplate warmers providing less dilution of costly medication

EASY TO USE

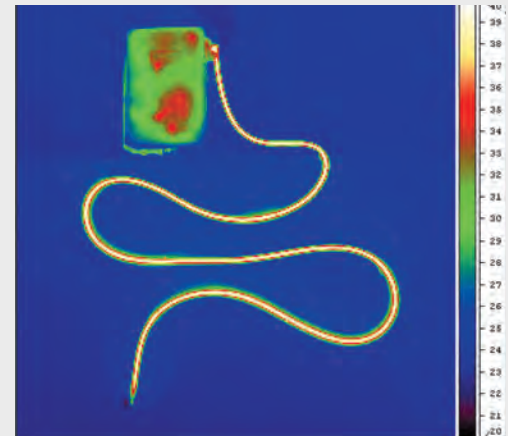
- Less time to set up than other warmers on the market
- Easy to connect/disconnect from the patient

ALSO HOT: HEAT FOR IMPROVED PATIENT OUTCOMES

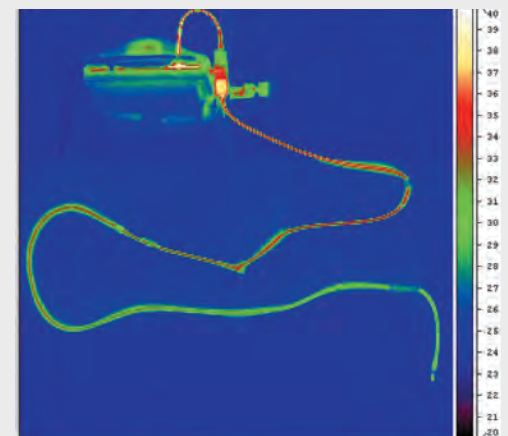
- Evidence-based program designed to reduce incidence of unplanned hypothermia
- Helps you meet accreditation compliance requirements
- Offered at no cost to qualified hospitals

1. The HOTLINE® Blood and Fluid Warmer outperforms hotplate technologies in procedures that require flow rates of 50-2,000 mL/hours.

2. Thermal photography. No retouching or digital manipulation. Extension added to hotplate warmer to provide equivalent patient line length. Data on file.



HOTLINE®



Ranger®

THE HOTLINE® BLOOD AND FLUID WARMER ELIMINATED PATIENT LINE COOL DOWN IN BENCH TESTING, WHILE THE RANGER HOTPLATE WARMER DELIVERED TEMPERATURE WELL BELOW 37° C.²

HOTLINE® - Blood and Fluid Warming

Normotherm infusions, up to 4 liters/hour.

Disposable set up: Patient line must be oriented to the bottom



Warming solution temperature is displayed on the screen

Alarms and alerts LEDs

Drain at the back to empty the reservoir



ON/OFF button

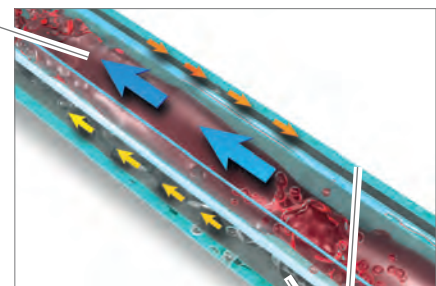
L-70/L-70NI

With its patented triple lumen tubing, the HOTLINE® Blood and Fluid Warmer can deliver normothermic fluid to your patients at routine flow rates.



Luer-lock connection at patient side

Internal lumen for infused fluid



External lumens for warming solution

THE SMITHS MEDICAL SOLUTION

For routine flow warming, choose the brand most hospitals trust: HOTLINE® Blood and Fluid Warmer. We're a leading global provider of medical devices for the hospital, emergency, home and specialist environments. Our products are used during critical and intensive care, surgery, post-operative care during recovery and in a series of high-end home infusion therapies.



HOTLINE® Blood and Fluid Warmers help deliver warmer patients, case after case.



We offer a variety of disposables for the HOTLINE® Blood and Fluid warmer.

ORDERING INFORMATION

HOTLINE® Blood and Fluid Warmers and Disposables

Product Code	Description	Units Per Case
HL-90	HOTLINE® Blood and Fluid Warmer	1
L-70	Blood and IV Fluid Warming Set with Injection Port	30
L-70 NI	Blood and IV Fluid Warming Set without Injection Port	30
L-80	Blood and IV Fluid Warming Set with L-10 Gas Vent	30
PC-8	T Connector	40
YC-8	Y Connector	40
L-10	Gas Vent	40

For more information visit our website at www.smiths-medical.com

PRODUCT(S) DESCRIBED MAY NOT BE LICENSED OR AVAILABLE FOR SALE IN CANADA AND OTHER COUNTRIES

Smiths Medical Australasia Pty. Ltd.
Suite 2.03, 97 Waterloo Road
Macquarie Park NSW 2113
Ph AU: 1800 654 949
www.smiths-medical.com

Distributed by:
USL Medical
494 Rosebank Road
Avondale, 1026 New Zealand
Ph NZ: 0800 658 814

Find your local contact information at: www.smiths-medical.com/customer-support

Smiths Medical is part of the global technology business Smiths Group plc. Please see the Instructions for Use/Operator's Manual for a complete listing of the indications, contraindications, warnings and precautions. Hotline and the Smiths Medical and Level 1 design marks are trademarks of Smith Medical. The symbol ® indicates the trademark is registered in the U.S. Patent and Trademark Office and certain other countries. All other names and marks mentioned are the trademarks or service marks of their respective owners.

©2016 Smiths Medical. All rights reserved. TM194800ENAU-082016

MPAUC-1253

**Rx
ONLY**
smiths medical