

Saf-T Wing® Blood Collection Set

Technical Summary Sheet



DEVICE DESCRIPTION

The Saf-T-Wing® Blood Collection Set is a sterile, single-use needle set designed for venous blood draws utilizing a safety feature activated with a simple one-or two-handed technique.

INDICATIONS*

- The Saf-T Wing® Blood Collection Set provides needle protection to the clinician following venous blood collection when using a winged needle.
- The Saf-T Wing Infusion Set is intended for administration of intravenous fluids to a patient.

PRECAUTIONS*

Follow standard infection control procedures as specified by the Centers for Disease Control and Prevention (USA) or local equivalent.

When using vacuum tubes with small diameters, use of an adapter of an appropriate size is recommended. Caution should be exercised to ensure that the stopper is punctured centrally and that the tubes are not placed in the holder at an angle.

Do not reuse: Medical devices require specific material characteristics to perform as intended. These characteristics have been verified for single use only. Any attempt to re-process the device for subsequent re-use may adversely affect the integrity of the device or lead to deterioration in the performance.

DEVICE COMPONENTS

The set is available with 21G, 23G or 25G needles, with 15 cm or 30 cm tubing, and with or without a pre-attached Saf-T-Holder® device, or multi-Luer adapter that is used with a single use holder.

COMPONENT COMPOSITION:

- Saf-T-Wing® needle cannula and Saf-T-Holder® needle cannula - 304 stainless steel
- Saf-T-Wing® needle hub - Polyvinyl Chloride
- Needle cannula lubricant - Medical Fluid
- Needle sheath - Polypropylene
- Saf-T-Wing® - Polyethylene
- Tubing - Polyvinyl Chloride
- Female Luer Lock - Polycarbonate
- Female Luer Caps - Polypropylene
- White Clamps - High Density Polyethylene
- Adhesives - VCK1, Loctite 3311
- Multisample Adapter - Acrylonitrile Butadiene Styrene
- Saf-T-Holder® barrel - Polypropylene
- Saf-T-Holder® Needle Cover (boot) - Isoprene Rubber, not made with natural rubber latex

MANUFACTURING SITE NAME AND ADDRESS

Distribution

Smiths Medical ASD, Inc.
10 Bowman Drive, Keene, NH, USA

Manufacturing

Smiths Healthcare Manufacturing SA de C.V.
Avenida Calidad No. 4
Parque Industrial Internacional
Tijuana, Baja California 22425
Mexico

COUNTRY OF ORIGIN

Mexico

ANIMAL ORIGIN

The device does not incorporate any substances that are derived from animal or human origin as defined in Article 1.1(f)(d) of Directive 2007/47/EC.

STERILIZATION METHOD

Smiths Medical uses a validated ethylene oxide (EtO) sterilization cycle to sterilize this product. The products are for single use only and they cannot be re-sterilized.

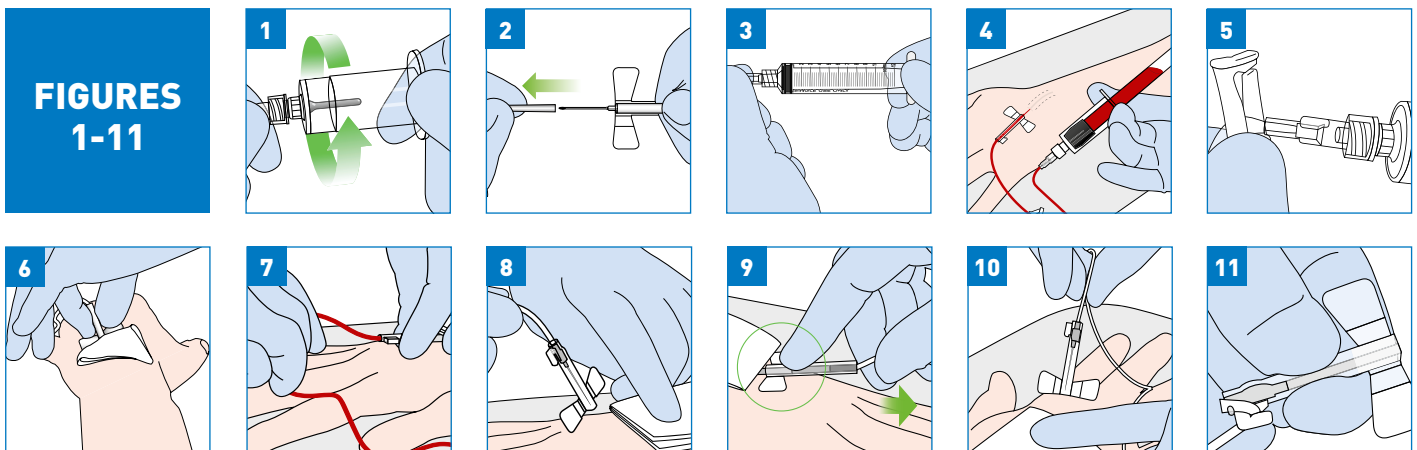
SHELF LIFE

A 5-year expiration date is assigned as long as the packaging is undamaged and unopened.

LABELING AND PACKAGING

Discard if open, wet, or damaged. One (1) blood collection set is packaged in a flexible peel-open blister. Cases are packed as four (4) shelf boxes of fifty (50) units. The shelf box is paperboard and cartons are corrugated paper. The lot number, manufacturing date, and expiration date are located on all levels of packaging.

Container Type	Length	Width	Height	Weight
Shelf Carton	311.15 mm	120.7 mm	117.5 mm	2.27 kg
Case	315.9 mm	255.6 mm	250.8 mm	10 kg



BLOOD COLLECTION INSTRUCTIONS FOR USE:

Use Aseptic Technique.

Using Saf-T Wing® Blood Collection Set with Saf-T Holder® device provided:

1. Peel blister pouch and remove device. Firmly secure the holder (See Figure 1) to female Luer.
2. Prepare venipuncture site according to institutional policy.
3. Carefully remove needle sheath away from needle (See Figure 2) and perform venipuncture following standard technique.
4. Collect blood into the vacuum tube by placing the tube into the holder and pushing the vacuum tube stopper over the needle (See Figure 4). Hold the tube in place until blood stops flowing. Additional tubes may be used as appropriate. A blood draw loss of approximately 0.57 mL (with 12" (30 cm) tubing) or 0.31 mL (with 6" (15 cm) tubing) may result when collecting the first tube sample.

Using Saf-T Wing® Blood Collection Set with Syringe:

1. Attach Luer lock or Luer slip syringe to female Luer and tighten (See Figure 3). Carefully, remove needle sheath away from needle (See Figure 2).
2. Perform venipuncture procedure following standard technique.
3. Perform syringe blood draw per institutional procedure. Slowly draw back on the syringe plunger to collect the blood sample.

Changing from a vacuum tube draw to a syringe draw in the event of a vein collapse.

1. Close clamp on Saf-T Wing® device (See Figure 5).
2. Remove Saf-T Holder® device from Saf-T Wing® device
3. Attach Luer lock or Luer slip syringe to the female Luer and tighten (See Figure 3).
4. Perform syringe blood draw per institutional procedure. Slowly draw back on the syringe plunger to collect the blood sample.

Activating the Safety Mechanism using the two-handed procedure:

- Place gauze over the venipuncture site.
- Keeping hands behind the needle, stabilize Saf-T Wing® by placing the thumb and index finger of one hand on the patient about ¼" on either side of the wing body, and with other fingers pointing away from the clinician.
- Still touching the patient with the index finger and thumb, move the thumb and index finger in to grasp and stabilize the wing body (See Figure 6).
- Holding the wing body for stability, grasp the tubing between the thumb and index finger of the opposite hand, and pull. A slight initial resistance may be felt as the needle begins to retract into the wing body. Continue pulling on the tubing until a final "click" is felt or heard (See Figure 7). Visually confirm that the needle is fully retracted and locked into the wing body.
- Release the wing body and pull the Saf-T Wing® device away from the venipuncture site with the hand that grasped the tubing. Apply digital pressure to the gauze covered insertion site with the hand that held the wing body (See Figure 8).

Note: The tubing can be secured using the clamp on the side of the wing body (Figure 11).

OR

Activating the Safety Mechanism using the one-handed procedure:

- Place gauze over the venipuncture site.
- Using index finger, place gentle pressure on the finger stop (See Figure 9).
- With the thumb and middle finger, grasp the tubing behind the safety device.
- Gently pull back on the tubing. A slight initial resistance may be felt as the needle begins to retract into the wing body. Continue pulling on the tubing until a final “click” is felt or heard (See Figure 7). Visually confirm that the needle is fully retracted and locked into the wing body.
- Remove Saf-T Wing® device from site with hand that grasped the tubing. Apply pressure to venipuncture site with the other hand (See Figure 10).

Note: The tubing can be secured using the clamp on the side of the housing (See Figure 11).

After use, place sharps in a suitable sharps container.

Dispose of contaminated product in a safe manner according to Centers for Disease Control and Prevention, USA and Federal/ State/Local regulations (EPA, OSHA) and health care facility guidelines or local equivalent.

INFUSION INSTRUCTIONS FOR USE:

Use Aseptic Technique

1. Select the smallest gauge device appropriate for the infusion.
2. Peel blister pouch and remove device.
3. Attach the appropriate infusion set/device to the Saf-T Wing® set. Make sure to secure connections prior to priming.
4. Prime the Saf-T Wing® set using a primed infusion set or syringe per institutional policy/procedure until fluid flows from the open end of the needle assuring that all air is removed from the system.
5. Select and prepare the site per institutional policy/procedure.
6. Carefully remove the needle sheath away from the needle (see figure 2).
7. Access the vein at an appropriate angle with the Saf-T Wing® set per institutional policy/procedure. Flashback will confirm successful vein entry.
8. Begin administration of solution/medication.
9. Properly secure the device per institutional policy/procedure.

ORDERING INFORMATION

Saf-T Wing® blood collection set without Saf-T Holder® blood tube holder

Order Code	Description
972106	21G x 19.05 mm with 152.4 mm of tubing
972112	21G x 19.05 mm with 304.8 mm of tubing
972306	23G x 19.05 mm with 152.4 mm of tubing
972312	23G x 19.05 mm with 304.8 mm of tubing
972506	25G x 19.05 mm with 152.4 mm of tubing
972512	25G x 19.05 mm with 304.8 of tubing

Saf-T Wing® blood collection set with Saf-T Holder® blood tube holder attached

982106	21G x 19.05 mm with 152.4 mm of tubing
982112	21G x 19.05 mm with 304.8 mm of tubing
982306	23G x 19.05 mm with 152.4 mm of tubing
982312	23G x 19.05 mm with 304.8 mm of tubing
982506	25G x 19.05 mm with 152.4 mm of tubing
982512	25G x 19.05 mm with 304.8 mm of tubing

Saf-T Wing® blood collection set with Saf-T Holder® blood tube holder not attached

982106D	21G x 19.05 mm with 152.4 mm of tubing
982112D	21G x 19.05 mm with 304.8 mm of tubing
982306D	23G x 19.05 mm with 152.4 mm of tubing
982312D	23G x 19.05 mm with 304.8 mm of tubing
982506D	25G x 19.05 mm with 152.4 mm of tubing
982512D	25G x 19.05 mm with 304.8 mm of tubing

Saf-T Wing blood collection set without Saf-T Holder blood tube holder and Luer adapter (not available in all regions)

Order Code	Description
982106L	21G x 19.05 mm winged needle with 152.4 mm of tubing
982112L	21G x 19.05 mm winged needle with 304.8 mm of tubing
982306L	23G x 19.05 mm winged needle with 152.4 mm of tubing
982312L	23G x 19.05 mm winged needle with 304.8 mm of tubing
982506L	25G x 19.05 mm winged needle with 152.4 mm of tubing
982512L	25G x 19.05 mm winged needle with 304.8 mm of tubing

smiths medical

bringing technology to life

For more information visit our website at www.smiths-medical.com

PRODUCT(S) DESCRIBED MAY NOT BE LICENSED OR AVAILABLE FOR SALE IN CANADA AND OTHER COUNTRIES

Smiths Medical ASD, Inc.

6000 Nathan Lane North
Minneapolis, MN 55442, USA
Tel: 1-614-210-7300
Toll-Free USA: 1-800-258-5361
www.smiths-medical.com

Smiths Medical International

1500 Eureka Park, Lower Pemberton
Ashford Kent, TN25 4BF
Tel: +44 (0)845 850 0445

MKEECA-0110

Rx 
ONLY

Find your local contact information at: www.smiths-medical.com/customer-support/contact-us

smiths medical

Smiths Medical is part of the global technology business Smiths Group plc. Please see the Instructions for Use/Operator's Manual for complete listing of the indications, contraindications, warnings and precautions. Saf-T Wing, Jelco and the Smiths Medical design mark are trademarks of Smiths Medical. The symbol ® indicates the trademark is registered in the U.S. Patent and Trademark Office and certain other countries. All other names and marks mentioned are the trademarks or service marks of their respective owners. ©2019 Smiths Medical. All rights reserved. SS195441GB-112019