

SPECTRO₂ | 30 Pulse Oximeter



Dependable results, plus the flexibility to perform in virtually any clinical setting

Utilizing BCI[®] patented technology, the SPECTRO₂ | 30 pulse oximeter can be trusted for dependable readings on a wide range of patients in the most challenging situations.

Includes multiple operating modes with audible and visual alarms and the ability to be alerted through a remote nurse call system to ensure patient safety.

The SPECTRO₂ | 30 oximeter enables healthcare providers to monitor for efficacy of respiratory treatments.

- At risk patients
- Sleep screening
- Post anesthesia recovery
- Analgesics monitoring

With its unique features and optional accessories, the SPECTRO₂ | 30 oximeter can be customized to address the needs in most clinical settings.

For more information about the SPECTRO₂ | 30 oximeter and its associated accessories, visit smiths-medical.com/bci.

PATIENT MONITORING

SPECTRO₂ Pulse Oximeter Series –
Designed With You in Mind

SPECTRO₂ | 30 Pulse Oximeter Features

Dependable readings for a wide range of patients in challenging situations

- Low perfusion performance and motion tolerance

PI (Pulse Amplitude Index) Indicator

- Helps identify and maintain a good test site
- Enables confidence in results

Versatility with multiple sensors

- Compatible with all BCI[®] sensors
- Nellcor[®] sensor compatibility¹

Visual, audible and remote alarms

- Alerts for potential clinical intervention
- Remote alarm operates through nurse call system

One of the largest displays on the hand-held market

- At-a-glance patient assessment
- Easy to view from wide angles
- 50% larger LEDs than comparable hand-held devices

On-board sensor storage cradle

- Stores and protects sensor when not in use

Programmable modes

- Clinician, home and sleep modes

¹ Tested with Nellcor[®] DS100A sensor.

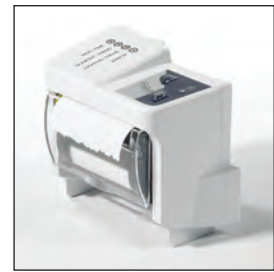
Optional Accessories

• Docking Station

- Converts hand-held device to a table-top unit
- Allows for convenient storage
- Recharges device and an additional "back-up" Lithium Ion battery
- Modular style for attaching optional printer



Docking Station



Attachable Printer

• Attachable Printer

- Prints real-time, graphical and numerical trends



Power Options



Protective Rubber Gloves

• Power Options

- Disposable batteries
- AC power
- BCI[®] rechargeable Lithium Ion battery
- USB cable

• Protective Rubber Gloves

- Available in a range of colors

Technical Specifications

DISPLAYS AND INDICATORS

• Keys

5-button keypad for menu navigation and device configuration; ON/OFF button

SpO₂ (FUNCTIONAL)

• Range

0 to 100% (1% increments); display maximum 99%

• Standard Accuracy

Adult / Ped $\pm 2 A_{rms}$ at 70 - 100%
Neonate¹ $\pm 3 A_{rms}$ at 70 - 100%
Less than 70% unspecified

• Low Perfusion Accuracy

Adult / Ped $\pm 2 A_{rms}$ at 70 - 100%
Neonate¹ $\pm 3 A_{rms}$ at 70 - 100%
Less than 70% unspecified

• Motion Accuracy²

Adult / Ped $\pm 3 A_{rms}$ at 70 - 100%
Less than 70% unspecified

• Averaging

2 (Sleep Mode only); 4, 8, or 16 pulses (default = 8)

• Alarms

High: off and 99 - 51, 1 step [%SpO₂] increments
Low: 50 - 99, 1 step [%SpO₂] increments

PULSE SIGNAL STRENGTH

• Range

0 to 9 indicator, indicates logarithmic strength of patient pulse

• Display – 9-segment red LED bargraph

¹With the BCI[®] 1302 Sensor.

²With the BCI[®] 1300 Sensor.

PULSE RATE

- **Range** – 20 - 300 bpm (1 bpm increments)
- **Standard Accuracy** – $\pm 2 A_{rms}$
- **Low Perfusion Accuracy**
 $\pm 3 A_{rms}$ over 25 - 250 bpm range
Less than 70% unspecified (Pulse amplitude <1%. Tested using industry standard simulator.)
- **Averaging**
8 or 16 seconds (default = 8); Sleep Mode = 8
- **Alarms**
High: 300 - 21 bpm in 1 bpm increments
Low: 20 - 299 bpm in 1 bpm increments

PULSE AMPLITUDE INDEX

- **Range** – 0.03% - 20% (0.01% increments)
- **Display** – 9-segment green/yellow LED bargraph

POWER REQUIREMENTS

• Battery

4 "AA" alkaline or custom 2-cell Lithium Ion rechargeable battery pack

• External (from mains)

9V, 3A output; input of 100-240 VAC, 50Hz, 60Hz

• External (from USB)

Input: 5V, 500mA max (USB powered source)
Output: 9V, 230mA max to oximeter

BATTERY LIFE

• Alkaline Cells Life

Approx. 17 hours of continuous use

• Rechargeable Battery Life

Approx. 30 hours of continuous use (new);
Approx. 3 hours typical recharge time

MEMORY – Stores data for up to 99 patients

TREND STORAGE

• Parameters

%SpO₂, Pulse Rate, Pulse amplitude Index and absolute time from RTC

• Interval

Selectable from 2 to 30 seconds in 1 second intervals [2, 3, 4, 5, ... 30]

• Capacity

72 hours of storage at 2 second intervals

• External Connectors

Oximeter Sensor DB-9 Connector; Custom interconnect allowing connection for either USB communications, AC Mains Power input, or dock connection with or without printer

ENVIRONMENT

• Operating Temperature

Oximeter and accessories: 0°C to 55°C (32°F to 130°F)

Power supply: 0°C to 40°C (32°F to 104°F)

Li+ battery charging: 5°C to 45°C (41°F to 113°F)

• Relative Humidity

Operating: 15 to 95% (non-condensing)

Storage: 10 to 95% (non-condensing)

• Altitude – Up to 10,000 ft.

• Shock and Vibration – Transport per ISO 9919

PHYSICAL

• Dimensions – 3.3W x 6.1H x 1.7D in

• Weight – 340g including four "AA" batteries

STANDARDS

EN60601-1, EN60601-1-2, ISO 9919

WARRANTY – 3 years

CATALOG NUMBER – WW1030

PRODUCT(S) DESCRIBED MAY NOT BE LICENSED OR AVAILABLE FOR SALE IN CANADA AND OTHER COUNTRIES

Smiths Medical ASD, Inc.
St. Paul, MN 55112, USA
Phone: +1-614-210-7300
Toll-Free USA 1-800-258-5361
www.smiths-medical.com

Find your local contact information at: www.smiths-medical.com/customer-support

Smiths Medical is part of the global technology business Smiths Group plc. Please see the Instructions for Use/Operator's Manual for a complete listing of the indications, contraindications, warnings and precautions. SPECTRO₂, BCI, and the BCI and Smiths Medical design marks are trademarks of Smiths Medical. The symbol © indicates the trademark is registered in the U.S. Patent and Trademark Office and certain other countries. All other names and marks mentioned are the trademarks or service marks of their respective owners. ©2014 Smiths Medical. All rights reserved. PM195631EN-102014

MPAUC-1140

Rx
ONLY

smiths medical