

## Point of Care Guide for Clinicians



CADD®-Solis  
Medication Safety Software  
**For use with the CADD®-Solis  
Ambulatory Infusion Pump**



# Contents

Introduction.....	1
Setup/Log in.....	1
Menu Bar Information .....	2
Protocol Tab .....	4
Connecting the Pump to the Computer.....	7
Weight-Based Protocol.....	7
Verification Screens .....	9
Reports Tab.....	11
Log Out.....	13

Refer to the Help files within the software for warnings, important notes and additional information. Consult the CADD®-Solis medication safety software – point of care installation guide for details on installing the software.

**WARNING:** Read the entire Help files located in the CADD®-Solis medication safety software - point of care before operating this software program, and read the entire Operator’s Manual before operating the CADD®-Solis ambulatory infusion pump. Failure to properly follow warnings, cautions and instructions could result in death or serious injury to the patient.

## Introduction

The CADD®-Solis medication safety software – point of care allows you, the clinician, to use a personal computer to send pump programs to the CADD®-Solis ambulatory infusion pump using a therapy-based Protocol database, which is set up by the CADD®-Solis medication safety software – administrator. You may also use the software to view and print reports from the Protocol database, as well as from the pump.

## Setup/Log In

1. Turn on your computer and login, if required
2. Double click the **CADD®-Solis Point of Care** icon
3. Enter your **User ID** and **Password**, if required
4. Click **Log In**

Contact your administrator to reset your password if you have forgotten it or are unable to login.

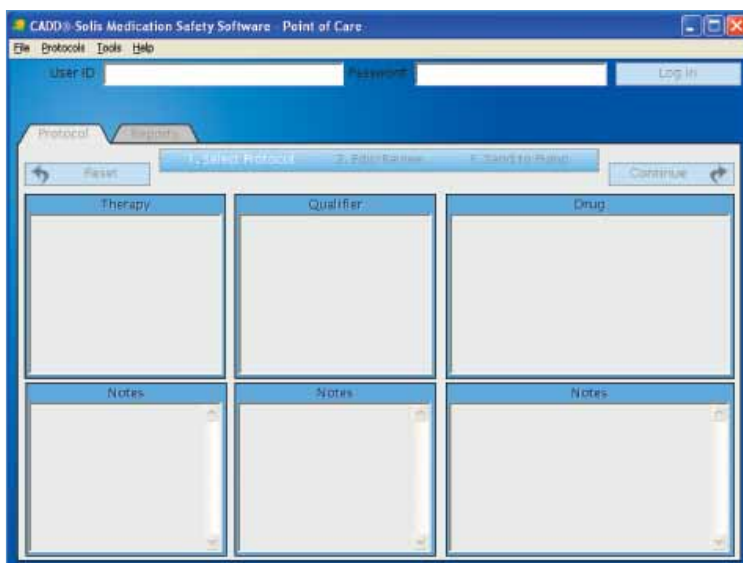
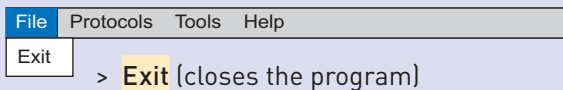


Figure 1: CADD®-Solis medication safety software – point of care.  
The main Log In screen.

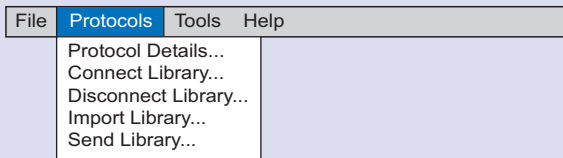
## Menu Bar Information

### File

The menu bar is a row of onscreen buttons that, when clicked, activate certain functions of the program. You may need to be logged in to use some of these functions. The menu bar functions are described on the following pages.

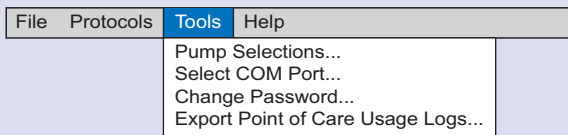


### Protocols



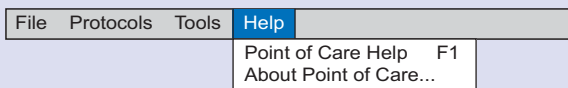
- > View **Protocol Details** when a protocol (Therapy, Qualifier and Drug) has been selected. These are the pump settings.
- > **Connect Library** (to a network or local server) - Clinicians accessing more than one protocol library may need to use Connect Library to access a different protocol library. In order to connect to a different library you'll need to know the connect password. Contact your local administrator for the password.
- > **Disconnect Library** - Clinicians may need to disconnect from the current protocol library before connecting to the one they want to use. Contact your local administrator for the password.
- > **Import Library** (from CD-ROM, disk or removable drive) - Import will be used for computers not on a network.
- > **Send Library** - A protocol library may be sent to the CADD®-Solis pump. The pump must be connected in order to send a library.

## Tools



- > **Pump Selections** is configurable to allow the user to select the type of pump they are working with. Select CADD-Prizm® PCS II pump and/or CADD®-Solis pump.
- > **Select COM Port** - This feature is only applicable for use with the CADD-Prizm® PCS II ambulatory infusion pumps (with software revision H).
- > **Change Password** allows you to change your personal password.
- > **Export Point of Care Usage Logs** allows the administrator to export the logs to a different location.

## Help



- > **Point of Care Help F1** - software Help system
- > **About Point of Care** - displays the product part number, version, connected library, database version, and database server information.

## Protocol Tab

Click on the Protocol tab in order to select the therapy, related qualifier and drug information you intend to send to the pump.

### Step 1: Select Protocol

- Click on a **Therapy** name, a **Qualifier** option, and a listed **Drug** per physician's order

Review notes associated with the therapy, qualifier and protocol per your facility policy and procedures.

If this is a weight based protocol, see Weight Based Protocol (page 7) for additional information.

- Click **Continue** to **Edit/Review** patient specific parameters or click **Reset** to clear your selection and start over

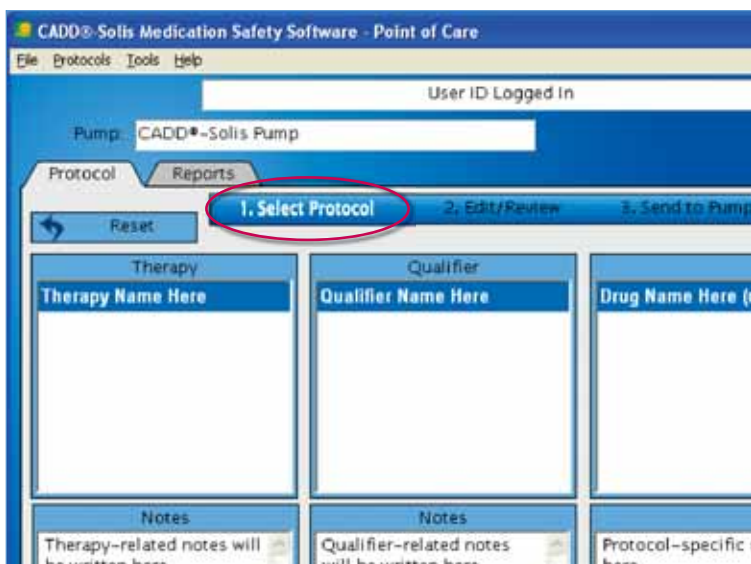


Figure 2: CADD®-Solis medication safety software – point of care. Select Protocol screen.

## Step 2: Edit/Review

After selecting a protocol, the Patient Specific Parameters screen will be displayed. Per the physician's orders enter or scroll to the values desired to program the pump.

Depending on the protocol selected you may need to enter the Continuous Rate, PCA Dose, PCA Dose Lockout, Maximum PCA Doses per Hour, Delivery Limit and/or the Reservoir Reset Volume values.

An amber mark appears if the value is outside of the soft limit.

**Patient Specific Parameters (Modified)**

Back | 1. Select Protocol | **2. Edit/Review** | 3. Send to Pump

Library: New Library  
 Pump: CADD®-Solis Pump  
 Therapy: Therapy Name Here  
 Qualifier: Qualifier Name Here  
 Drug: Drug Name Here (mL)

Continuous Rate	PCA Dose	PCA Dose Lockout	Maximum PCA Doses per Hour
mL/hr	mL		
2.5	0.5	0 Hrs 15 Min	4
6	2	1 Hrs 0 Min	12

Figure 3: CADD®-Solis medication safety software – point of care. Edit/Review screen.

Depending on the protocol selected you may not see all of the above options

- Enter the desired value by typing in the box, using the up or down arrow keys or clicking on the arrow and dragging it up or down.
- If the arrow is within the green section of the bar, the programmed value is within the soft limits of the protocol. If the arrow is within the amber section of the bar, the programmed value is outside of the soft limits of the protocol. You may be required to enter a comment. See Verification Screens (pages 9-10).
- Click **Send to Pump** after all values have been entered and verified

**Note:** When you change the protocol any lockout time in effect will be cleared. A demand dose could be requested immediately upon starting the pump resulting in over-delivery.

### Step 3: Send to Pump

- a. Verification screens may need to be completed before the protocol is sent to a pump. See Verification Screens (pages 9-10) for additional information.

After the verification screens have been completed, the software will bring you to the Send to Pump screen.



Figure 4: CADD®-Solis Medication safety software – point of care. Send to Pump screen.

- b. Connect the stopped pump to the computer (see Connecting the Pump to the Computer on page 7)
- c. Review the Patient Specific Parameters
- d. Click **Send**

**Note:** The pump must be stopped and on the Home screen in order to send a protocol to it. To get to the Home screen when starting a new patient, turn on the CADD®-Solis pump. To the question, “Is this a new patient?” answer “No” by selecting the appropriate soft key. (You will be programming the new patient on the computer, not on the pump.)

If the protocol already exists on the pump or if it’s located within the pump Protocol Library you may receive a Communication Error. On the pump verify that you’re sending a new protocol.

- e. When the computer displays that the protocol was successfully sent to the pump, you will have the option to print the protocol
- f. Click **Close** to return to the main screen

## Connecting the Pump to the Computer

The pump must be connected to the computer in order to send a protocol or protocol library, or get the event history.

1. Power up the pump and wait for the power up sequence until six beeps are heard
2. Connect the USB Type A plug to the USB port on the computer
3. Connect the USB Mini-B plug to the USB port on the pump

**Note:** The pump must be stopped and on the Home screen in order to send a protocol to it.

## Weight Based Protocol



The screenshot shows a software window titled "Weight-Based Protocol". It contains a list of parameters: Library (New Library), Pump (CADD-Solis Pump), Therapy (Therapy Name Here), Qualifier (Qualifier Name Here), and Drug (Weight-Based Drug 1 mg/mL). Below this list is a section for "Enter weight" with a numeric spinner set to "10" and the unit "kg". Below the spinner, the range "(10 kg - 20 kg)" is displayed. At the bottom of the window are two buttons: "Back" with a left-pointing arrow and "Continue" with a right-pointing arrow.

Figure 5: CADD®-Solis medication safety software – point of care. Weight-Based Protocol screen.

When using the weight based protocol, the user must understand the continuous rate, PCA dose amount and delivery limit amount are programmed in a “per kilogram” format (units per kg per hour), i.e. mg/kg/hr. Ensure that all weights are entered in kilograms (ie. mg/kg or mg/kg/hr).

1. Enter the patient’s weight in kilograms, within the range displayed
2. Click **Continue**
3. Complete the **Patient Specific Parameters** as described in Step 2 Edit/Review and Step 3 Send to Pump

The “per kilogram” format may be viewed at the bottom of the Continuous Rate, PCA Dose and Delivery Limit scroll bars.

**Patient Specific Parameters (Modified)**

1. Select Protocol    2. Edit/Review    3. Send to Pump

Library: New Library  
 Pump: CADD® Solis Pump  
 Therapy: Therapy Name Here  
 Qualifier: Qualifier Name Here  
 Drug: Weight-Based Drug 1 mg/mL

Send to Pump    Help

**Weight-Based Protocol**  
**10 kg**

Continuous Rate	FCA Dose	FCA Dose Lockout	1 Hour Delivery Limit	Reservoir Reset Volume
mg/hr	mg	0 Hrs 12 Min	mg	mL
2.5	0.8	1 Hrs 0 Min	5	50
15	5	0 Hrs 10 Min	30	9,999
0.25 mg/kg/hr	0.08 mg/kg		0.1 mg/kg	

Figure 6: CADD®-Solis medication safety software – point of care. Weight-Based Protocol Patient Specific Parameters screen.

**Note:** All values will be displayed on the pump LCD screen in Units (mg, mcg or mL) format.

## Verification Screens

Depending on the information you have entered, you may or may not see the following verification screens.

### Enter Comment

Enter a Comment

Library: New Library  
Pump: CADD®-Solis Pump  
Therapy: Therapy Name Here  
Qualifier: Qualifier Name Here  
Drug: Drug Name Here (mL)

Print

The following parameters have a value outside of the soft limit range:  
Continuous Rate

You must enter a comment before downloading to a pump.  
Type in your comments here

Cancel Continue

Figure 7: CADD®-Solis medication safety software – point of care. Enter a Comment screen.

You may be required to enter a comment if you adjusted a parameter outside of the soft limit range. If this step is required, enter a comment according to your facility's policy.

Click **Continue**.

### Second Nurse Verification

Second Nurse Verification

Library: New Library  
Pump: CADD®-Solis Pump  
Therapy: Therapy Name Here  
Qualifier: Qualifier Name Here  
Drug: Drug Name Here (mL)

This Protocol requires a second verification. Enter User ID and Password for the log.

User ID: User ID  
Password: \*\*\*\*\*

Back Continue

Figure 8: CADD®-Solis medication safety software – point of care. Second Nurse Verification screen.

A second nurse verification may be required before sending the protocol to the pump. If this step is required, have a second nurse verify the Patient Specific Parameters.

As the second nurse, if you find the parameters to be acceptable:

1. Enter your **User ID** and **Password**
2. Click **Continue**

As the second nurse, if you find the parameters to be unacceptable:

1. Do not enter your User ID and Password
2. Click on **Back** and have the first nurse correctly modify the parameters
3. When the values are acceptable enter your **User ID** and **Password**

## Drug Verification



Figure 9: CADD®-Solis medication safety software – point of care. Verify Drug screen.

Drug verification may be required before sending the protocol to the pump.

If this step is required, according to your facility's procedures, verify the medication label and the prescription.

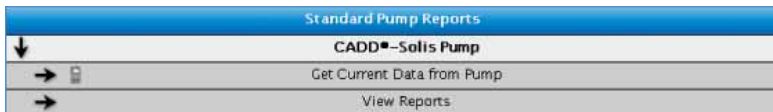
1. If you have a barcode scanner attached to your PC, scan the barcode that corresponds to the drug you intend to use. You may also manually type in the Drug ID using your keyboard.
2. Click **Continue**
  - a. If the Drug ID is valid, click **Continue**
  - b. If the Drug ID is invalid, click **Back**, verify the drug and re-enter the **Drug ID**

## Reports Tab

Click on the **Reports** tab in order to get the Event History from the pump and view reports.

**Note:** The history data must be downloaded from the pump before viewing reports. The pump must be connected in order to get the history from the pump.

1. Select CADD®-Solis Pump



2. Click **Get Current Data from Pump**
3. Assign a **Patient ID** then click **Get Events** or select **No Patient ID** then click **Get Events** to save the **History Data** according to pump serial number only

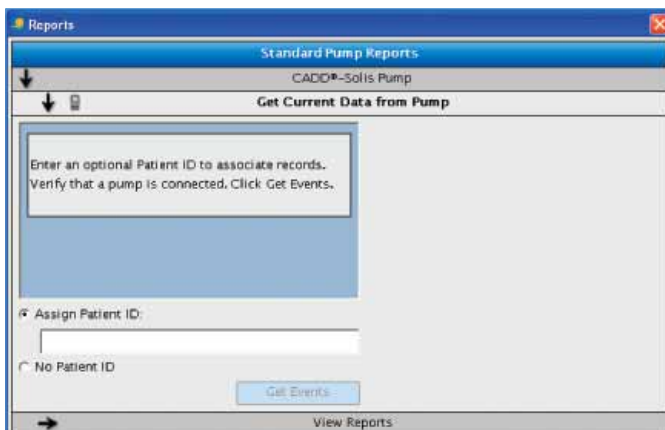


Figure 10: CADD®-Solis medication safety software – point of care. Standard Pump Reports screen – Get Current Data from Pump.

**OR**

4. Click **View Reports**

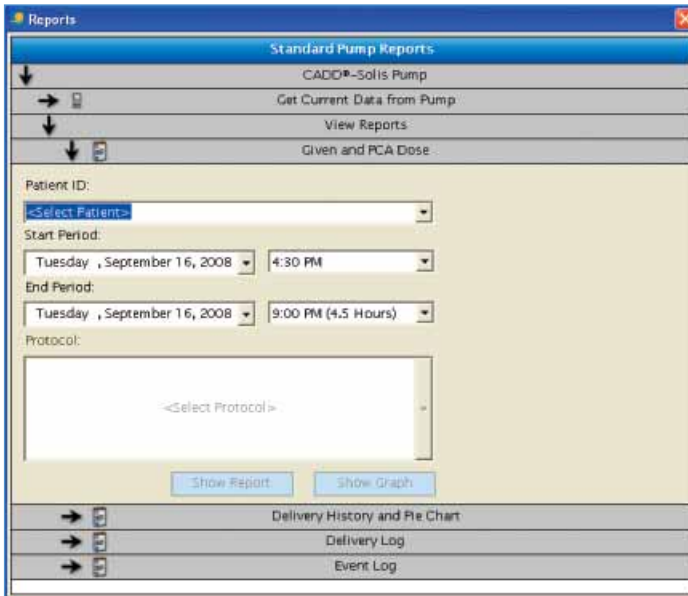


Figure 11: CADD®-Solis medication safety software – point of care. Standard Pump Reports Screen – View Reports.

5. Select the report you wish to view

- a. Click **Given and PCA Dose** and select a **Patient ID, Start Period, End Period, and Protocol**, and click **Show Report** to view the data in report form, or **Show Graph** to view the data graphically

**OR**

- b. Click **Delivery History and Pie Chart** and select a **Patient ID, Start Period, End Period, and Protocol**, and click **Show Chart** to view the report

**OR**

- c. Click **Delivery Log** and select a **Patient ID, Start Period, End Period, and Protocol**, and click **Show Report** to view the report

**OR**

- d. Click **Event Log** and select either a **Patient ID or Pump Serial Number**, and a **Start Period, End Period, and Protocol**, and click **Show Report** to view the report
  - i. Save the report by clicking **Save**. Save as a new or existing patient, enter the **Patient ID** and click **Save**
  - ii. Print the report by clicking the **Print** icon

- iii. Export the report as either a Microsoft® Excel file or Acrobat (PDF) file by clicking the **Export** icon
- iv. Close the report by clicking the **X** in the top right hand corner of the screen

## Log Out

To log out of the CADD®-Solis medication safety software-point of care, click **Log Out**.

To exit the software, click **File** in the menu bar and select **Exit**.

# CADD<sup>®</sup>-Solis

## Ambulatory Infusion System

Designed to help you connect

### Smiths Medical Offers Outstanding Support

- > Clinical and technical support  
24 hours a day, 7 days a week
- > Education and training materials  
for clinicians and patients

1-800-426-2448

[www.smiths-medical.com](http://www.smiths-medical.com)

THE DETAILS GIVEN IN THIS LEAFLET ARE CORRECT AT THE TIME OF GOING TO PRESS. THE COMPANY RESERVES THE RIGHT TO IMPROVE THE EQUIPMENT SHOWN

**Smiths Medical MD, Inc.**

St. Paul, MN 55112, USA  
Phone: 1-800-426-2448  
[www.smiths-medical.com](http://www.smiths-medical.com)

**Smiths Medical, part of the global  
technology business Smiths Group**

**Customer and Clinical Services**

**1-800-426-2448**

**[www.smiths-medical.com](http://www.smiths-medical.com)**

CADD, CADD-Solis, CADD-Prizm and the Smiths Medical design mark are trademarks of the Smiths Medical family of companies. The symbol ® indicates the trademark is registered in the U.S. Patent and Trademark Office and certain other countries. ©2009 Smiths Medical family of companies. All rights reserved. 2/09 193508

**smiths medical**