

Cleo® 90 Infusion Set Training Guide



cleo⁹⁰
infusion set

To insert site and connect the tubing set



1 Wash hands, dry thoroughly.



2 Prepare site, allow to dry.



3 Twist cap to remove.



4 Inspect device for adhesive and insertion needle.



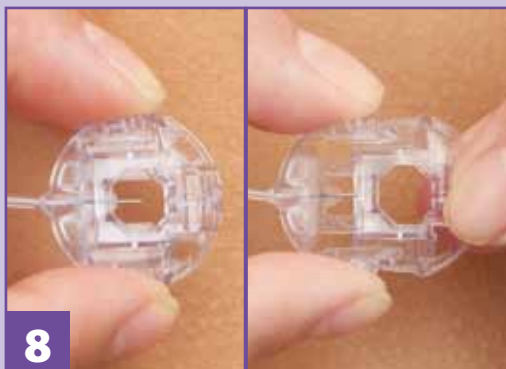
5 Press device firmly on site. Hold for 5 seconds, pull straight off.



6 Press to secure adhesive.



7 Connect the tubing set and fill according to the pump User Manual.



8 Pinch slide connector arms inward and slide fully open.



9 Position site connector onto site with tubing in desired direction.



10 Secure connector over site, push together until audible "click."



11 Fill cannula with medication. (U100 insulin)



12 Verify needle retracted. If still visible, press down on outer edge until needle retracts fully.

Additional Tips

- Do not use if site adhesive is missing from the top of the Cleo® set.
- Do not use if spring has activated and is visible in the device grip area.
- When Cleo® set adhesive has touched skin, do not reposition, as adhesive will lift prematurely from the device.
- Before disposal, inspect to see if needle is retracted; if still visible press down on outer edge until needle retracts.
- Dispose of in a manner consistent with other disposable medical products.

To disconnect



Pinch connector arms to open. Lift off site.

To remove site



Press finger near peel dot. Peel back adhesive.



NOTE: This training guide is intended as a reference only. Please refer to the Instructions for Use provided with this product, which contains essential information, warnings and cautions of which the user must be made aware.